

AEROLITE TRAVEL TRAILERS AND EXPANDABLES BY



Dutchmen®

Legendary Innovation. Trailblazing Value.

AEROLITE



LIKE **NO OTHER**
ULTRA LITE ON
EARTH



AEROLITE

LUXURY CLASS

Set your sights high and reach for the stars. Aerolite, a campground legend, has been **setting the bar in ultra lite innovation for more than 20 years**. Cutting-edge construction coupled with industry-leading features both inside and out keeps Aerolite years ahead of the competition. There's a reason we call it our Luxury Series.

LED LIGHTING
IS FEATURED
THROUGHOUT
THE RV

AEROLITE LUXURY CLASS 282DBHS

STAINLESS-STEEL
APPLIANCES
FOR A MODERN FINISH

APPEALING AND
EASY-TO-CLEAN
SOLID-SURFACE
COUNTERTOPS

HIGH-END KITCHEN AMENITIES

On-the-road meals don't have to be quick and easy or light on ingredients when you travel in the luxury-inclined Aerolite. These galleys were constructed to provide everything an owner could want, from stainless-steel appliances, solid-surface countertops, plenty of cabinet space and more.

LIKE **NO OTHER**
ULTRA LITE ON
EARTH



AEROLITE LUXURY CLASS

THE HEIGHT OF SMART DESIGN AND COMFORT



SPACIOUS BARRELED CEILING

SIT BACK AND STAY A WHILE

With a long list of luxury features, Aerolite owners are able to live in the moment and enjoy solid-surface countertops, stainless-steel appliances and LED lighting - all found throughout the RV. In addition to Beauflor® flooring, a crowned interior roof (select models) and an iN-Command remote operating system on the Luxury Class, the Aerolite was designed with premium traveling in mind.

COMFORTABLE ON-THE-GO LIVING

WHETHER IT'S A QUIET WEEKEND GETAWAY OR A WHOLE-FAMILY EXCURSION, THE ALL-NEW AEROLITE LINEUP ENSURES THAT EVERY DETAIL HAS BEEN ACCOUNTED FOR.

UPGRADED RESIDENTIAL FURNITURE

Each area of the Aerolite was built for exceptional lounging. Featuring a large residential sofa and plush dinette cushions made with a durable and reversible vinyl, messes are easily dealt with to preserve your travel trailer's already sleek appeal.

AEROLITE

SET YOUR SIGHTS HIGH AND REACH FOR THE STARS

AEROLITE LUXURY CLASS 282DBHS**WELCOME TO
FIRST-CLASS LIVING**

Thanks to the lightweight aluminum construction, these RVs are packed with everything a full-time traveler could want. Starting with a stainless-steel sink, microwave and 3-burner range top in the kitchen, you're already elevated above other lightweights. Paired with upgraded residential furniture and bright LED lighting, you're on your way to an unforgettable vacation. Finally, with large bed sizes and a multi-functional living area, all you'll need is a welcome home mat.

**MULTI-FUNCTIONAL
HAPPIJAC® BUNK BED
AND STORAGE SPACE****NIGHT SHADES
FEATURED
THROUGHOUT THE
LIVING AREA****UPGRADED
RESIDENTIAL
FURNITURE****AEROLITE LUXURY CLASS****ALUMINUM
UPGRADED
ENTRY STEPS****THE HEIGHT OF SMART DESIGN**

THIS IS YOUR SPACE... YOU CHOOSE HOW YOU LIVE IN IT. The all-new Aerolite provides spacious and luxurious floorplans that let owners decide how they experience the open road. Whether it's the Happijac® bunk beds on the Luxury Class, whole-coach LED lighting, an exterior power awning with LED patio lighting or the stainless-steel appliances, these travel trailers deliver a smart design that keeps passengers coming back, mile after mile.

**LEVELING-UP**

The Ground Control Leveling System, found on most models, makes leveling your Aerolite easier than ever. A simple interface allows you to auto level the RV, while owners can also manually direct and retract the jacks, if necessary.

**ON STABLE GROUND**

In addition to the leveling jacks, your Aerolite comes with a fully-enclosed underbelly and fully-laminated aluminum frame construction for the best in durability and stability.

**YOU'RE IN
COMMAND**

No more fiddling with switches and guessing when it comes to the many features found throughout your RV. The Luxury Class' IN-Command remote operating system makes identifying and controlling the majority of your devices a breeze.



**FEATURING
AN IN-BATH
SKYLIGHT**

ALL YOU NEED AND MORE

The Aerolite's luxury extends into the roomy bathroom space. Here, travelers will find a large countertop surrounding the sink and dual-handle faucet, as well as a medicine cabinet with mirror and underneath storage to fit all the essentials.

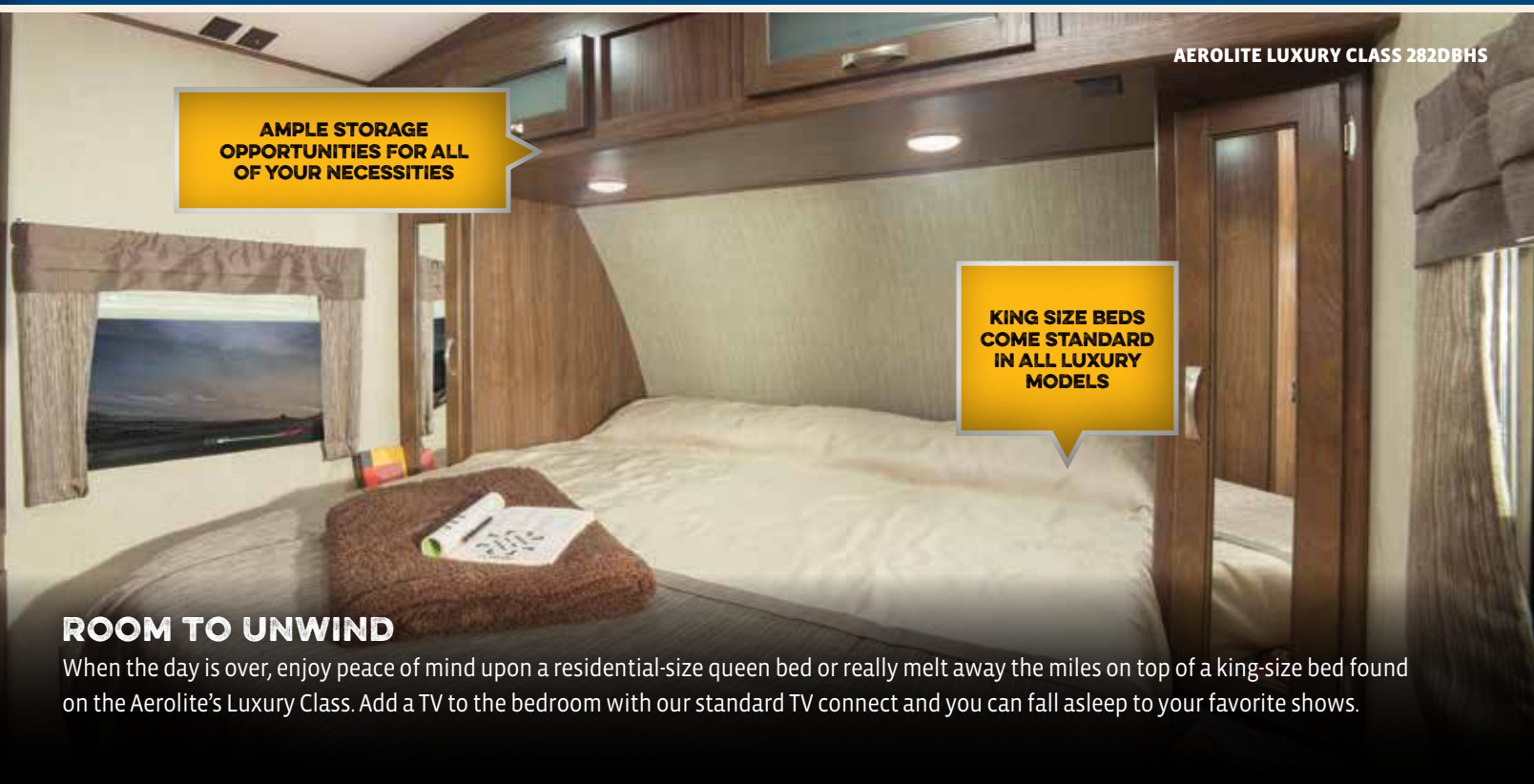
ROOM FOR THE WHOLE FAMILY

Not your traditional bunk or loft space. Select Aerolite Luxury Class models come with a Happijac® bunk bed setup. These three-layer bunks lower to provide extra sleeping space, a spot for activities or additional storage. Then once you're done, they raise back up to accommodate larger items, making for a clutter-free home.



**SHELVING
SPACE FOR
TOYS, BOOKS
OR ANY
OF YOUR
ESSENTIALS**

LIKE NO OTHER ULTRA LITE ON EARTH



AEROLITE LUXURY CLASS 282DBHS

**AMPLE STORAGE
OPPORTUNITIES FOR ALL
OF YOUR NECESSITIES**

**KING SIZE BEDS
COME STANDARD
IN ALL LUXURY
MODELS**

ROOM TO UNWIND

When the day is over, enjoy peace of mind upon a residential-size queen bed or really melt away the miles on top of a king-size bed found on the Aerolite's Luxury Class. Add a TV to the bedroom with our standard TV connect and you can fall asleep to your favorite shows.

AEROLITE



AEROLITE

REACH FOR THE STARS

IT FEELS LIKE HOME... BECAUSE IT'S BUILT LIKE ONE. Each Aerolite lineup was designed with the features you need to enjoy late summer nights, early sunrises and capture memories only found when you're out on the road. From dark-tinted windows, night shades in the living area and multiple skylights on select models, the Aerolite's long list of conveniences help keep your eyes on the destination, rather than on the details.

WHOLE
HOME LED
LIGHTING
THAT'S
EASY ON
THE EYES



AEROLITE 2320BHSL

YOUR MODERNIZED MOBILE KITCHEN

Ensuring that Aerolite owners have everything they're looking for in a brand-new RV, these kitchens come fully stocked with stainless-steel appliances and large countertops, as well as plenty of underneath and overhead storage for their five-star cooking needs.

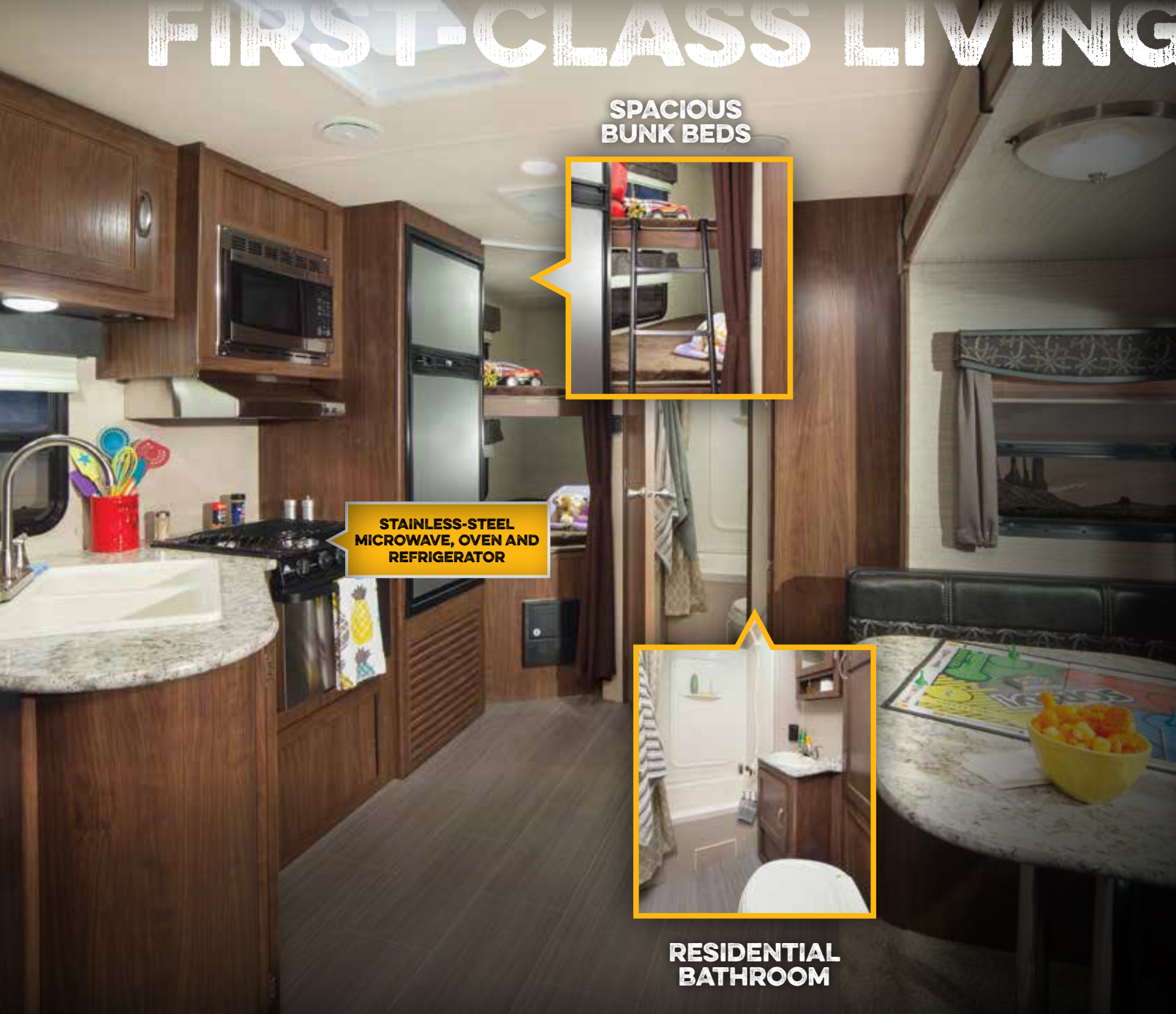


FIRST-CLASS LIVING

**SPACIOUS
BUNK BEDS**



**STAINLESS-STEEL
MICROWAVE, OVEN AND
REFRIGERATOR**



**RESIDENTIAL
BATHROOM**

AEROLITE 2320BHS1

**AN OVERHEAD
STORAGE
AREA KEEPS
CLUTTER OUT
OF SIGHT**

REST LIKE ROYALTY

Anything but standard, these Aerolites greet tired passengers with a residential queen-size bed, while also providing overhead reading lights to help active minds unwind at their leisure.

AEROLITE DÉCOR

NIGHTSCAPE

COOL SPRINGS

FRENCH ROAST

SOLAR POWER CHARGING PORT



POWER AWNING WITH LED PATIO LIGHTING



EXPERIENCE ON-THE-GO COMFORTS BEFORE YOU EVEN STEP INSIDE

AEROLITE STANDARDS AND OPTIONS

EXTERIOR PREMIUM PACKAGE

13,500-BTU Ducted A/C
30-lb LP Gas Bottles*
Back Up Camera Prep*
Battery Disconnect*
Dark-Tinted Safety Glass Windows
Double/Triple Entry Steps
Easy Lube Axles
Entry Assist Handle
Exterior Shower
Gelcoat Fiberglass Sidewalls
LP Gas Quick Disconnect
Outside Speakers
Painted Fiberglass Front Cap*
Patio and Hitch Lights
Power Awning with LED Lights
Slam Latch Baggage Doors
Solar Prep
Spare Tire and Carrier
Stabiltrack Suspension System

Stabilizer Jacks
TV Antenna

INTERIOR PREMIUM PACKAGE

12-Volt Bath Exhaust Fan
6 cu. ft. Double Door Refrigerator
6-GAL Gas/Electric DSI Water Heater
8 cu. ft. Double Door Refrigerator*
Bath Skylight
Beauflor® Flooring
Bedroom TV Hookup
Bedroom TV Hookup with LCD Backer
Bluetooth Stereo
Cable/Satellite TV Hookup with Booster
Centralized Utility Panel
High Spout Pull Out Kitchen Faucet*
LED Lighting Throughout
Night Shades throughout Living Area
Porcelain Toilet*
Residential Sofa

Skylight in Kitchen/Living Room (N/A 174, 204, 224)
Stainless-Steel 3-Burner Range Top with Oven
Stainless-Steel Microwave
Stainless-Steel Range Hood with 12-Volt Fan/Light
Stainless-Steel Refrigerator Insert
Swivel Rockers (281, 294, 298)

MANDATORY OPTIONS

Aerolite Package
Aerolite Premium Package
Heated and Enclosed Underbelly
Radial Tires

EXTERIOR OPTIONS

15,000-BTU A/C (IPO 13,500)
2nd 13,500-BTU Non-Ducted Bedroom A/C (Floorplans 272 and larger)*
50-amp with 2nd Air Conditioner

(Select models)
Power Tongue Jack (NA 174, 204, 224)

INTERIOR OPTIONS

32" LED Flat Screen TV (Select models)
39" LED Flat Screen TV (Select models)
Auto Leveling*
Hybrid Aluminum Steps*
iN-Command remote operating system*
Solid-Surface Countertops*
Tri-Fold Deluxe Sofa (Select models)

AEROLITE PACKAGE (MANDATORY)

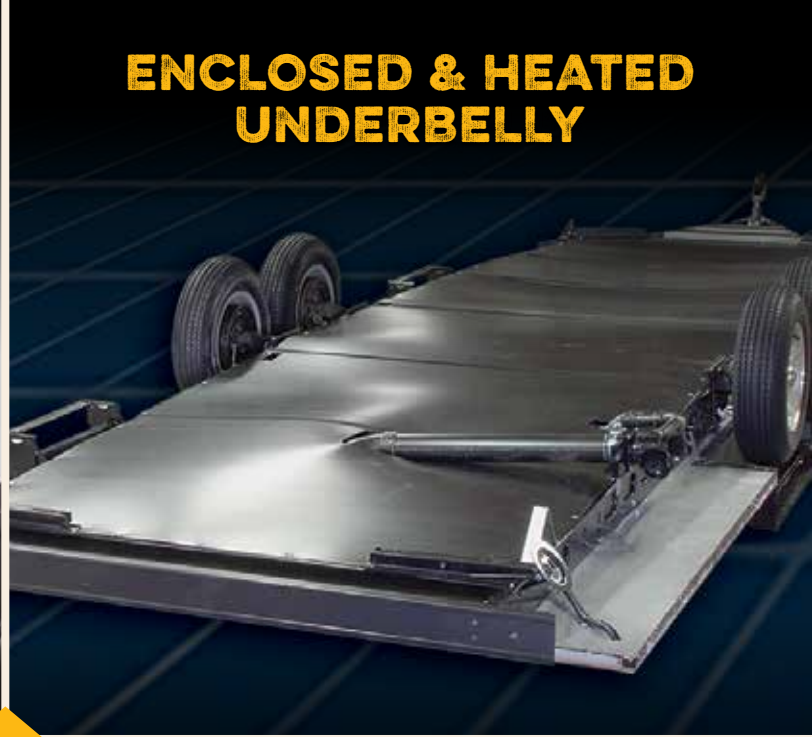
Aluminum Wheels
Black Flush Tank (NA 174, 204, 224)
Crowned Interior Roof*
King Bed*

DISCLAIMER: Product information is as accurate as possible, as of the date of brochure publication. All features, floorplans and specifications in this brochure are subject to change without notice. Please consult Dutchmen's website at www.Dutchmen.com for current product information and specifications. Tow Vehicle Disclaimer. **CAUTION:** Owners of Dutchmen recreational vehicles are solely responsible for the selection and proper use of tow vehicles. All customers should consult with a motor vehicle manufacturer or their dealer concerning the purchase and use of suitable tow vehicles for Dutchmen products. Dutchmen disclaims any liability or damages suffered as a result of the selection, operation, use or misuse of a tow vehicle. DUTCHMEN'S LIMITED WARRANTY DOES NOT COVER DAMAGE TO THE RECREATIONAL VEHICLE OR THE TOW VEHICLE AS A RESULT OF THE SELECTION, OPERATION, USE OR MISUSE OF THE TOW VEHICLE. REFERENCE DUTCHMEN MANUFACTURING OWNERS MANUAL FOR LIMITED WARRANTY DETAILS.

FULL PASS-THROUGH STORAGE



ENCLOSED & HEATED UNDERBELLY



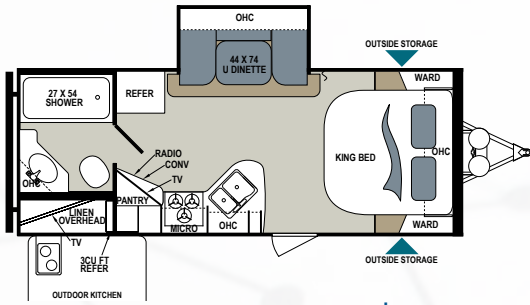
Store all your camping gear and road-side souvenirs inside the convenient and ample-sized full pass-through storage area, complete with slam latch baggage doors. Open and enjoy the expansive power awning with LED lighting or step inside with the help of an entry assist handle and stable fold-out entry steps. And remember that no matter where you go, the Aerolite features an aluminum structure to keep you and your valuables safe and secure.

AEROLITE SPECIFICATIONS

DIMENSIONS					WEIGHTS (LBS.)			TANKS (GALS.)		
MODEL	FLOORPLAN	*EXTERIOR TRAVEL LENGTH	EXTERIOR WIDTH	EXTERIOR HEIGHT (WITH A/C)	**AVERAGE SHIPPING WEIGHT	DRY HITCH WEIGHT	CARGO CARRYING CAPACITY	***FRESH WATER CAPACITY	GREY WATER CAPACITY	BLACK WATER CAPACITY
Aerolite Luxury Class	213RBSL	25', 8"	96"	133"	5,055	556	1,545	52	39	28
	221BHSL	26', 7"	96"	137"	5,477	801	1,123	52	39	28
	242BHSL	28', 6"	96"	133"	5,735	756	865	52	39	28
	272RBSS	31', 9"	96"	133"	6,945	935	2,735	52	67	28
	281RLSS	32', 2"	96"	134"	6,647	853	953	52	39	28
	282DBHS	33', 0"	96"	133"	6,452	903	1,148	52	39	28
	284BHSL	33', 10"	96"	133"	6,520	702	1,080	52	39	28
	292DBHS	34', 0"	96"	133"	6,746	929	854	52	39	28
	294RKSS	34', 2"	96"	132"	6,859	816	741	52	78	28
	298RESL	33', 11"	96"	134"	7,380	808	2,300	52	39	28
Aerolite	315BHSS	34', 0"	96"	132"	6,600	858	1,000	52	39	28
	319BHSS	37', 7"	96"	137"	8,577	1202	1,103	52	56	56
	174E	18', 6"	96"	120"	3,188	320	662	52	39	28
	204ES	24', 6"	96"	121"	4,260	564	2,340	52	39	28
	224ES	25', 11"	96"	119"	4,536	608	2,064	52	39	28
	2110RBSL	25', 0"	96"	130"	4,449	543	2,151	52	39	28
	2320BHSL	27', 6"	96"	132"	4,956	548	1,644	52	39	28
	2520RKSL	30', 0"	96"	132"	5,206	579	2,394	52	78	28
	2820RESL	32', 10"	96"	137"	6,236	780	1,364	52	56	28
	2830BHSL	TBD	96"	TBD	TBD	TBD	TBD	TBD	TBD	TBD

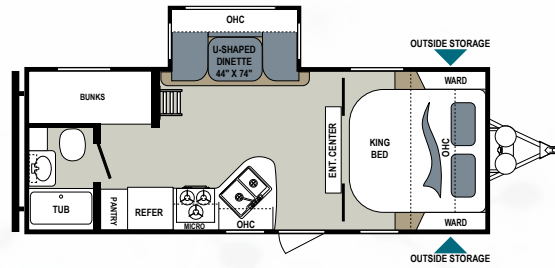
*Length is defined as the distance from the centerline of hitch pin/coupler to rear bumper of trailer. **Our weights represent how most units are built, inclusive of many commonly-ordered options. ***Fresh water capacity includes water heater capacity.

AEROLITE LUXURY CLASS FLOORPLANS



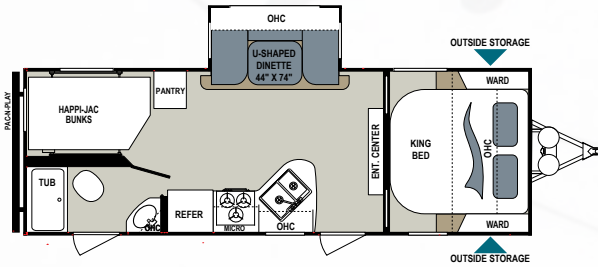
AEROLITE LUXURY CLASS | 213RBSL

Ext. Length: 25' 8" Ext. Height: 11' 1" Average Shipping Weight: 4,973 Sleeps: 4



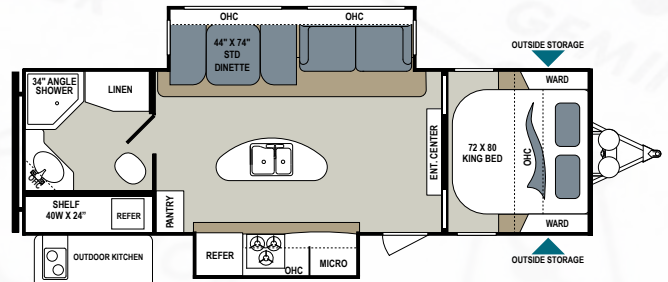
AEROLITE LUXURY CLASS | 221BHS1

Ext. Length: 26' 7" Ext. Height: 10' 10" Average Shipping Weight: 5,230 Sleeps: 6



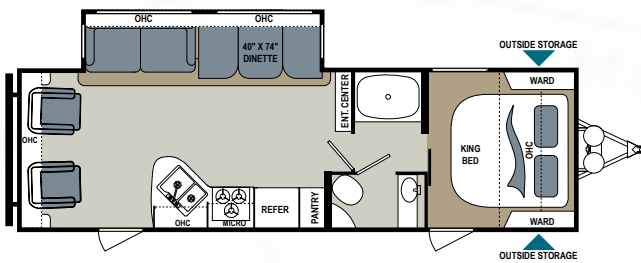
AEROLITE LUXURY CLASS | 242BHS1

Ext. Length: 28' 6" Ext. Height: 11' 1" Average Shipping Weight: 5,360 Sleeps: 10



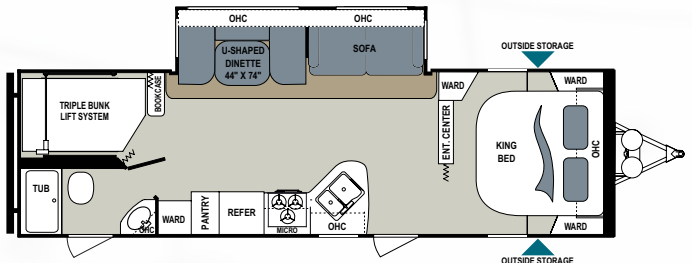
AEROLITE LUXURY CLASS | 272RBSS

Ext. Length: 31' 9" Ext. Height: 11' 1" Average Shipping Weight: 6,600 Sleeps: 6



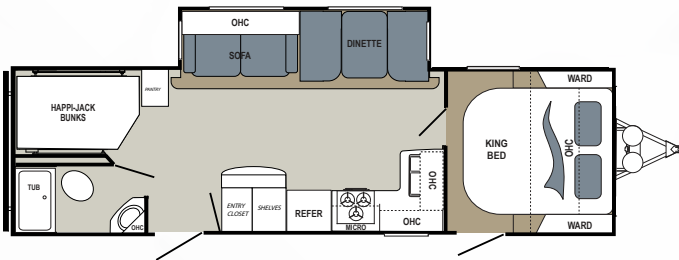
AEROLITE LUXURY CLASS | 281RLSS

Ext. Length: 32' 2" Ext. Height: 11' 2" Average Shipping Weight: 6,246 Sleeps: 6



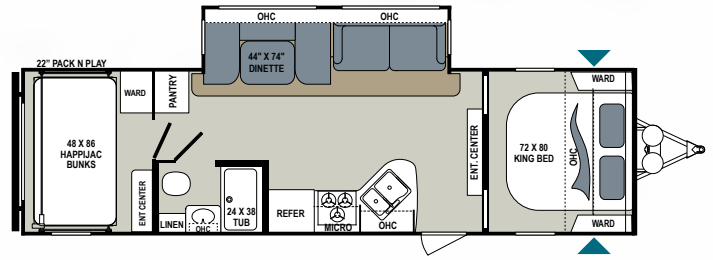
AEROLITE LUXURY CLASS | 282DBHS

Ext. Length: 33' Ext. Height: 11' 1" Average Shipping Weight: 6,210 Sleeps: 12



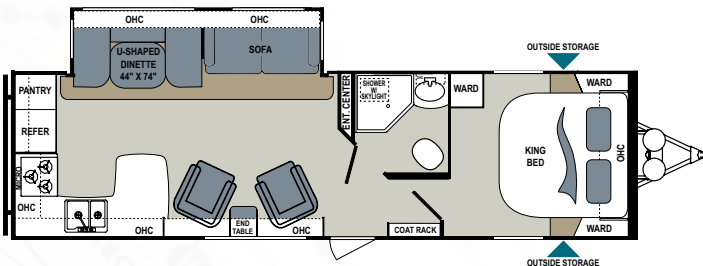
AEROLITE LUXURY CLASS | 284BHS1

Ext. Length: 33' 10" Ext. Height: 11' 1" Average Shipping Weight: 6,520 Sleeps: 8



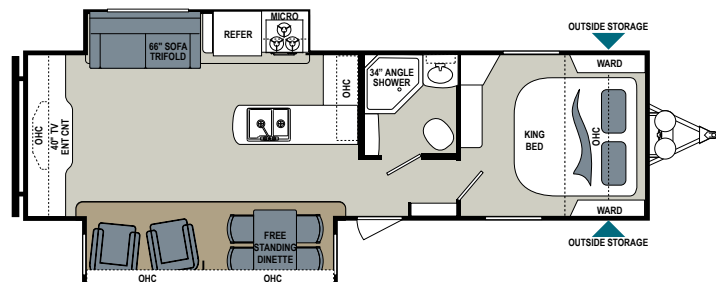
AEROLITE LUXURY CLASS | 292DBHS

Ext. Length: 34' Ext. Height: 11' 1" Average Shipping Weight: 6,452 Sleeps: 10



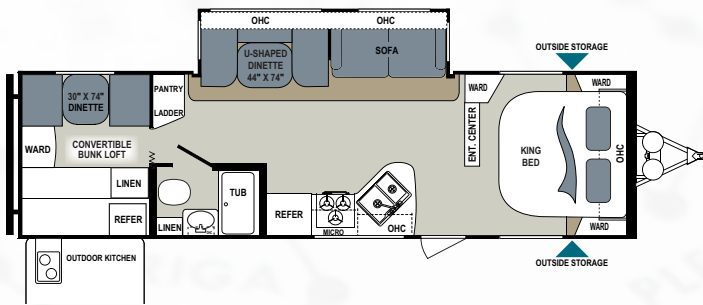
AEROLITE LUXURY CLASS | 294RKSS

Ext. Length: 34' 2" Ext. Height: 11' Average Shipping Weight: 6,359 Sleeps: 6



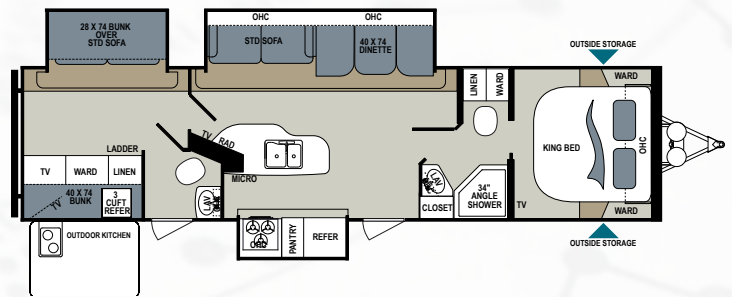
AEROLITE LUXURY CLASS | 298RES1

Ext. Length: 36' 10" Ext. Height: 11' 2" Average Shipping Weight: TBD Sleeps: 4



AEROLITE LUXURY CLASS | 315BHSS

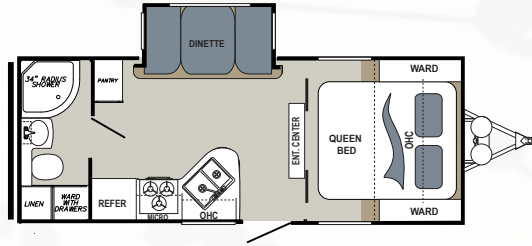
Ext. Length: 34' Ext. Height: 11' Average Shipping Weight: 6,640 Sleeps: 10



AEROLITE LUXURY CLASS | 319BHSS

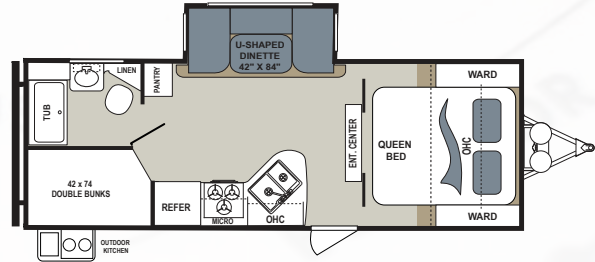
Ext. Length: 37' 7" Ext. Height: 11' 5" Average Shipping Weight: 8,339 Sleeps: 9

AEROLITE FLOORPLANS



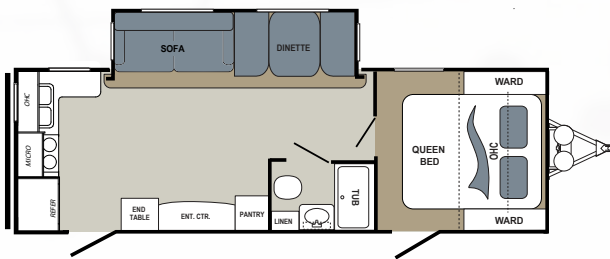
AEROLITE | 2110RBSL

Ext. Length: 25' 1" Ext. Height: 10' 10" Average Shipping Weight: 4,394 Sleeps: 4



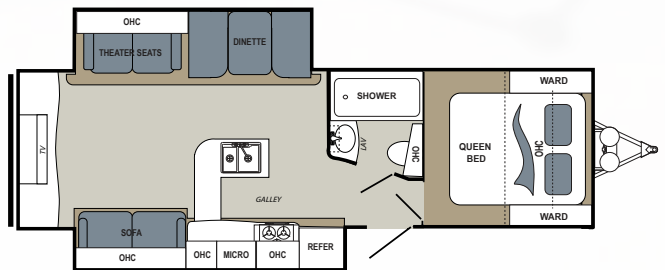
AEROLITE | 2320BHSL

Ext. Length: 27' 5" Ext. Height: 11' 1" Average Shipping Weight: 4,920 Sleeps: 6



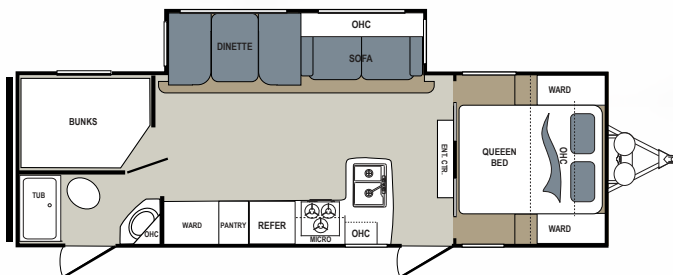
AEROLITE | 2520RKSL

Ext. Length: 30' Ext. Height: 11' Average Shipping Weight: 5,206 Sleeps: 6



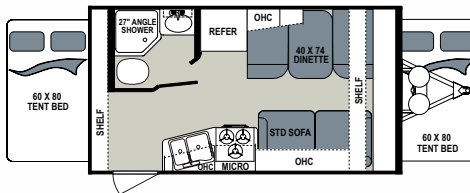
AEROLITE | 2820RESL

Ext. Length: 32' 10" Ext. Height: 10' 10" Average Shipping Weight: 6,236 Sleeps: 6



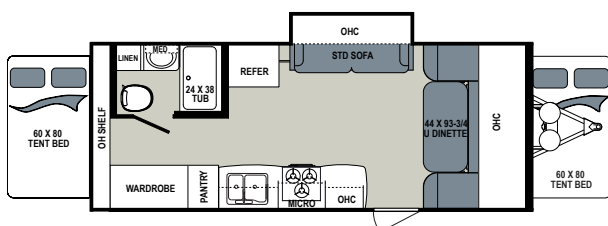
AEROLITE | 2830BHSL

Ext. Length: TBD Ext. Height: TBD Average Shipping Weight: TBD Sleeps: 10



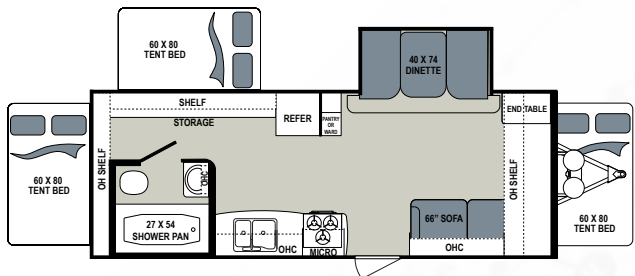
AEROLITE EXPANDABLE | 174E

Ext. Length: 18' 6" Ext. Height: 10' Average Shipping Weight: 3,136 Sleeps: 8



AEROLITE EXPANDABLE | 204ES

Ext. Length: 24' 6" Ext. Height: 10' 1" Average Shipping Weight: 4,281 Sleeps: 8



AEROLITE EXPANDABLE | 224ES

Ext. Length: 25' 11" Ext. Height: 9' 11" Average Shipping Weight: 4,536 Sleeps: 10

AEROLITE

MORE STANDARD FEATURES MORE VALUE

Dutchmen RVs turn more heads on the lot and in the campground than any other. Why? While other manufacturers offer features as options, Dutchmen tends to make those same features standard. Call it “bang for the buck,” “more for your money,” or simply “more value.” **We've built a reputation for bringing RV owners more standard features for less money** for more than 25 years . . . and it's a reputation we plan to keep.



Dutchmen®

Legendary Innovation. Trailblazing Value.

Dutchmen—A North American Campground Classic

Few manufacturers have built RVs for 25+ years, and only one has set the standard for innovation AND value. Dutchmen **IS** “A North American Campground Classic.”

300

STRONG

NATION WIDE DEALER NETWORK

More than 300 Dutchmen dealers across North America and our industry-leading service center in Goshen, Indiana, combine for your peace of mind before, during and after the sale. Rest assured no matter where your travels take you, **the best-resourced RV manufacturing company in the world is behind you all the way.**

PO BOX 2000 • 2164 Caragana Court
Goshen, Indiana 46527 Sales: 574.537.0600
www.dutchmen.com

At Dutchmen, quality is our standard. **Every single Dutchmen RV that comes off the line receives its own pre-delivery inspection.** Typically, a competitor performs random inspections, meaning you won't find this commitment to quality anywhere else.



To check for recent updates to floorplans and specifications. **Scan this QR CODE** with your favorite QR Reader application.



www.dutchmen.com

Visit us online to see all of the Dutchmen brands, innovative models and spacious floorplans.

Your local dealer

LaMESA RV

LaMesaRV.com
800-496-8778

From giving advice to servicing products, we consider our loyal dealers the best resource for learning about Dutchmen products.

AERO-HM0117-30K